



30" Gas Range

Wolf has perfected the form, function and sheer durability of our stainless steel gas ranges. The Wolf gas range offers a variety of standard features such as an infrared oven broiler, convection baking, dual brass surface burners and our signature large red control knobs. Wolf gas ranges are available in natural or LP gas.



Model R304 shown with 5" riser.
Also shown is Sub-Zero model BI-48S/O refrigerator/freezer.



Model R304

FEATURES

- Stainless steel exterior finish.
- Distinctive red control knobs with chrome bezels — black knobs optional.
- Dual brass burners with automatic reignition at all settings.
- Porcelain-coated cast iron grates.
- Large-capacity convection oven with infrared broiler and three adjustable oven racks.
- Spring/damper door hinge system.
- Stainless steel drip tray.
- Adjustable stainless steel legs in front and rear casters.
- Full side panels and skirt.

SURFACE FEATURES

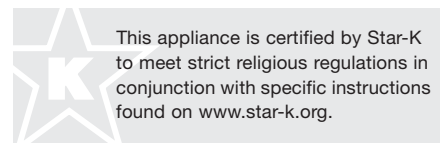
Model	R304
Surface Burners	
16,000 Btu / 500 Btu simmer	4

Model number is for natural gas range, add (-LP) to the model number for LP gas.

ACCESSORIES

- Stainless steel risers in 5" and 10", or 20" riser with shelf.
- Stainless steel island trim.
- Black control knobs.
- Porcelain-coated, cast iron wok grate.
- Porcelain-coated, cast iron two-burner S-grates.
- Oven rack.
- Full-extension ball bearing rack.

Accessories are available through your authorized Wolf dealer. For local dealer information, visit the find a showroom section of our website, wolfappliance.com.



This appliance is certified by Star-K to meet strict religious regulations in conjunction with specific instructions found on www.star-k.org.



Red control knobs.

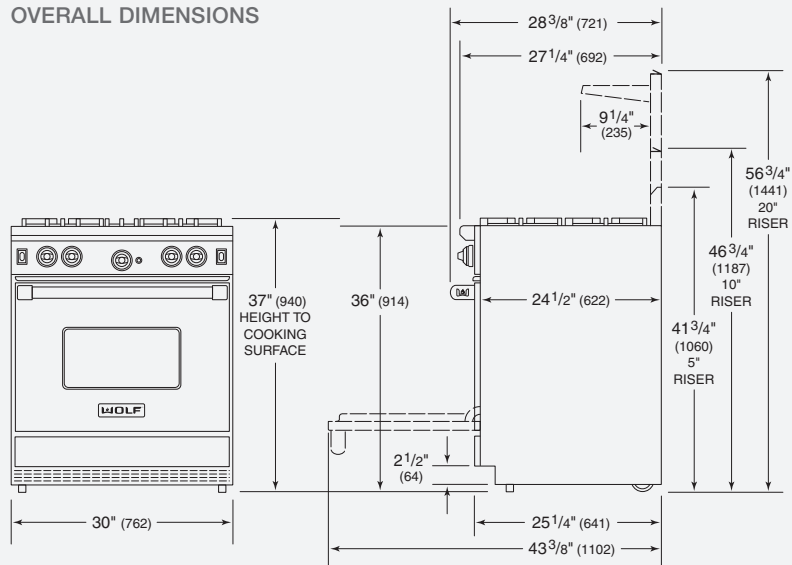


Dual brass burner.



30" Gas Range

OVERALL DIMENSIONS



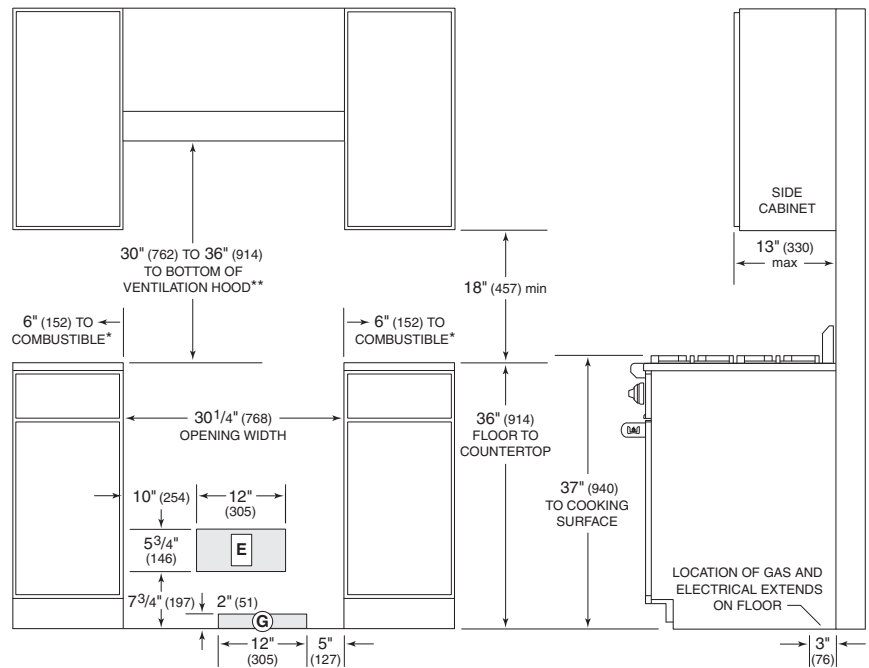
Unit dimensions may vary by $\pm 1/8$ ".

LEGS AND CASTERS ALLOW
1" (25) HEIGHT ADJUSTMENT

SPECIFICATIONS

Exterior Finish	Stainless Steel
Overall Width	30"
Overall Height (to cooking surface)	37"
Overall Depth	28 ^{3/8} "
Oven Interior Capacity	4.4 cu ft
Oven Interior Dimensions	24" W x 18 ^{5/8} " H x 17" D
Opening Width	30 ^{1/4} "
Opening Height (to countertop)	36"
Opening Depth	24"
Electrical Requirements	110/120 V AC 50/60 Hz, 15 amp circuit
Shipping Weight	325 lbs

INSTALLATION SPECIFICATIONS



*Minimum clearance from rough opening to combustible materials up to 18" (457) above countertop.

**36" (914) minimum clearance from countertop to combustible materials without ventilation hood.

NOTE: For island installations, 12" (305) minimum clearance from back of range to combustible rear wall above countertop.

INSTALLATION NOTES

A Wolf pro wall, chimney, island ventilation hood or hood liner is recommended.

Dimensions in parentheses are in millimeters unless otherwise specified.