

2007

CLASS A DIESEL
MOTORHOMES

DEDICATED TO QUALITY,
INNOVATION AND
VALUE.

GULF STREAM

COACH, INCORPORATED
FAMILY VALUE

CRESCENDO



CRESCENDO

BY GULF STREAM®



MODERN COCKPIT...

Driving the large and powerful Crescendo may be intimidating at first but once you become accustom to the controls and smooth handling of the intense 330 horsepower machine you will feel right at home in our ergonomic cockpit designed to put the controls right at your fingertips.



GALLEY CONVENIENCE...

Our wide-open galley offers all the comforts of your kitchen at home. 3-burner high performance range; 2-door, 2-way refrigerator and large convection microwave and optional dish washer you will be able to prepare any of your family's favorite meals.

OPTIONAL ELECTRONICS PACKAGE 30" LCD



COMFORTABLE DINING BOOTH ...

Gulf Stream delivers in the design and construction of the dinette table and seating.

The Comfort Plus dinette booth offers roomy seating for four.

Enhanced by large panoramic windows to take in the view while dining in your luxury motorhome.



LOW-PROFILE SATELLITE



GPS/MP3 SYSTEM





LIVING QUARTERS • MODEL 8386

SPACIOUS LIVING QUARTERS...

Open living areas that incorporate large slide rooms and residential style furniture make home away from home very comfortable. The overhead flat screen TV and the entertainment cabinet provide plenty of storage for music and movies to entertain everyone on a rainy day or quiet evening.

GULF STREAM



COACH, INCORPORATED
FAMILY VALUE

CRESCENDO

BY GULF STREAM®

COMFORT...

Deep set superslides in the main living area dramatically increase the living space of this Motorcoach. Gulf Stream's very own Comfort Plus furniture adorns the entire RV



SOFA • MODEL 8356

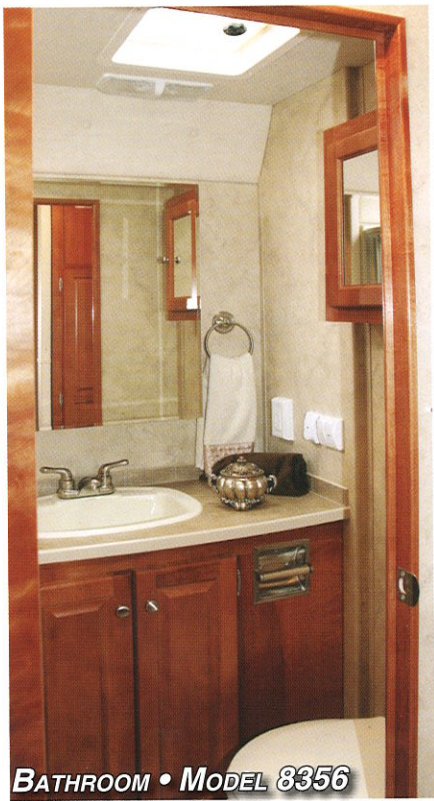


WARDROBE • MODEL 8386



BEDROOM • MODEL 8386

Large bedroom windows open up the bedroom letting in natural light and fresh air. The bedroom delivers plenty of storage for both his and her clothing. All floorplans include deep dresser drawers and large wardrobe storage to hang attire.



BATHROOM • MODEL 8356

BATHROOM...

The bathroom in the Crescendo makes it easy to prepare for the day ahead. The mirrored medicine cabinet and under-sink storage gives you room to hide away personal products, and the skylight in the shower stall provides natural light and additional headroom for tall travelers.



BEDROOM • MODEL 8386



BEDROOM • MODEL 8356

RESTFUL NIGHTS...

Gulf Stream knows that a comfortable night's sleep is an integral part of a great travel experience. That's why we give you many amenities that you enjoy at home in our cozy bedroom areas. Items including a Queen size bed, windows at the head of the bed for ventilation, air conditioning, vanity mirror, overhead storage and Optional 20" flat screen television.

GULF STREAM

COACH, INCORPORATED
FAMILY VALUE

SOLID HARDWOOD CABINETRY



**PREDRILLED
HARDWOOD
CONSTRUCTION**



Our residential style cabinets are constructed of solid hardwood doors and fronts that are predrilled and screwed then they are stained and top coated with a furniture grade finish that provides long lasting beauty and durability as well as adding strength and quietness to your motorhome.

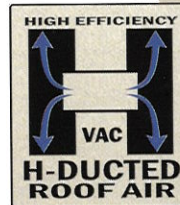
Other companies use wrapped cabinet fronts prone to peeling, fading and tearing. The softer composite wood used does not hold screws as well as hardwood resulting in loss of strength and squeaking. Discoloration will degrade the beauty and lower the value of the motorhome.

COMPETITOR'S CABINETRY

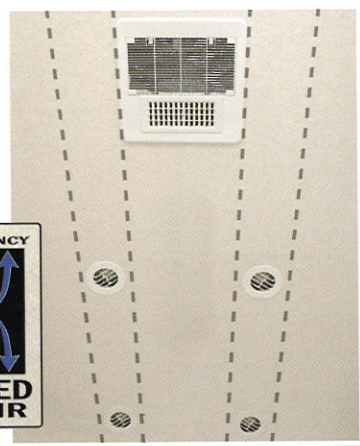


**GALVANIZED
STEEL
STORAGE
COMPARTMENTS**

Seamless, carpeted, galvanized steel storage compartments safely cradle your valuables. Rust protective paint and foam sealed for extended life and a quiet ride.



Dual metal H-Ducted air conditioning system with foil bubble wrapped insulation for superior climate control.



CRESCENDO

BY GULF STREAM®

Excellent Weathering -

Maintaining the vehicle's quality appearance enhances its resale value.

Seamless
Skid Resistant - Puncture Resistant
FIBERGLASS ROOF

Tear Resistance - Flexroofs hard abuse resistant finish resists tearing, a condition that can cause leaks and lead to expensive repair.

Low Maintenance - Road grime can easily be removed with normal cleaning maintenance. Rubber chalking due to solar breakdown of the roof surface is eliminated, preserving the original appearance and resale value of the vehicle.

Stain Resistance - Fiberglass Flexroof is designed to resist staining and maintain its quality appearance.

Structural Integrity - Unlike conventional EPDM rubber roof membranes, Flexroof is a structural component of the roof system.

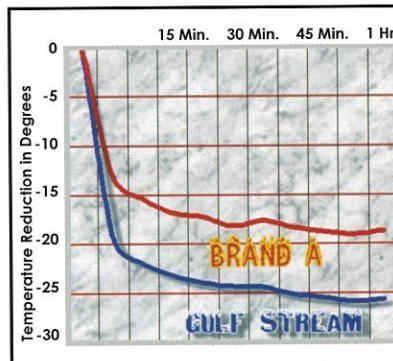
Textured Fiberglass - Helps dissipate heat and prevents tree limbs from tearing or scratching your roof.



Comfort Plus furniture by Gulf Stream Coach features residential styling, solid construction, total comfort and a comprehensive warranty.

FLUSH FLOOR
Slide out rooms

Gulf Stream offers true flush floor slide out rooms to give you more headroom in the slide and eliminates the step up into the slide room that you will experience in many of our competitors motorhomes.

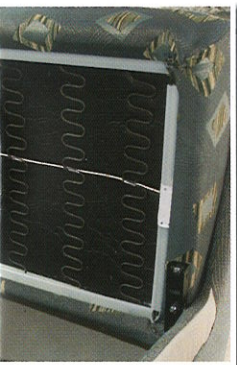


GULF STREAM VS. BRAND A Cool Down Comparison

- At 15 minutes, Gulf Stream cooled 7 degrees cooler.
- At 30 minutes, Gulf Stream cooled 9 degrees cooler.
- At 1 hour, Gulf Stream cooled 9 degrees cooler.

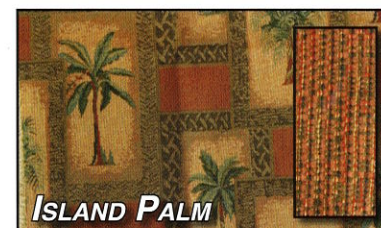
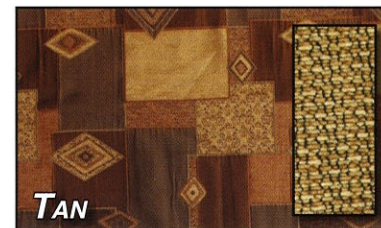
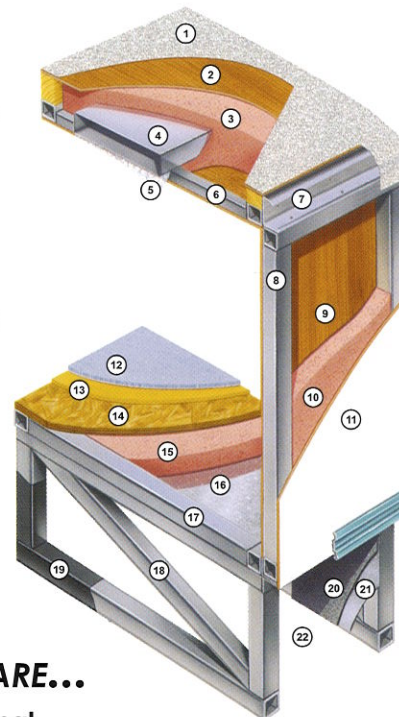
Finally, empirical data demonstrating the efficiency and performance of a roof air conditioning system versus a floor air conditioning system.
Winner: Roof air conditioning by Gulf Stream

Cradle of Strength



1. Seamless Fiberglass Roof For Greater Energy Efficiency, Durability and Dependability.
2. Luan Decking for Additional Strength.
3. Molded, High Density EPS (Expanded Polystyrene) Roof Brick Insulation - Provides Consistent Insulation Value as well as Superior Dimensional Rigidity.
4. One-Piece Formed Aluminum Air Conditioning Duct, Completely Surrounded By EPS Insulation.
5. Bubble-Wrapped Foil Insulation Provides Superior Insulation and Helps Prevent Condensation.
6. Rugged Welded Tubular Aluminum Roof Framing.
7. Heavy-Gauge Aluminum Radius Transition.
8. Rugged Heavy-Gauge Tubular Aluminum, Fixture Welded to Form the Sidewall Framing.
9. Interior Wall Panels Laminated to Sidewall Framing.
10. High-Density EPS Insulation Provides Superior Lamination and Bonding Characteristics and Insures Greater Energy Efficiency.
11. "Super Slick" Fiberglass Exterior Vacuum-bond Laminated to Sidewall Framing for Lasting Beauty and Durability.
12. High-Quality Stain-Resistant Carpeting Available in Designer Coordinated Colors.

13. Extra-Thick Padding Under Carpet Provides Extra Comfort and Increases Carpet Durability.
14. Seamless Structurewood Floor Decking Laminated to Steel Floor Structure Assures a Quiet, Long-Lasting Rigid Floor.
15. Block Foam Insulated Floor
16. Seamless Layer of Galvanized Steel Securely Laminated to the Steel Floor Framing.
17. Heavy-Gauge Tubular Steel Floor Framing, Fixture Welded for Extra Strength and Stability.
18. Heavy-gauge Tubular Steel Framed, Fixture Welded Truss System Provides the Strongest Foundation in the Industry.
19. Rust-Prohibitive Paint Coating Applied to All Steel Framing Assures Corrosion and Rust Protection.
20. Durable All-Weather Carpeting Completes Each Accessible Storage Compartment, Providing Extra Protection for Luggage and Valuables.
21. Galvanized Steel Used to Form Each Storage & Holding Compartment.
22. The Industry's Strongest, Most Spacious Exterior Storage Compartments.



NICKEL PLATE HARDWARE



TAKE THE TIME TO COMPARE...

and you will see the exceptional value of a Gulf Stream Coach

**ALL STEEL
OVERHEAD STRUCTURE**



TUFF-TRUSS
6000 lbs.

The Cradle of Strength super strength truss system is unmatched in the RV industry. The structural subfloor foundation begins by welding a network of integrated steel trusses to the chassis rail. Specifically designed to distribute and transfer the tremendous forces from the coach to the chassis rail, these trusses are individually tested to withstand 6,000 pounds each.

An all steel overhead structure installed above the cockpit brings strength and rigidity to the upper portion of the coach providing a safe strong platform to install a TV that will not break free in an impact while maximizing overhead storage.

GULF STREAM



COACH, INCORPORATED
FAMILY VALUE

CRESCENDO

BY GULF STREAM®

G.O.L.D. Program

(Gulf Stream Ownership)

Lifetime of Dedication)

Gulf Stream is dedicated to our customers and their enjoyment of our products. Our golden promise is to call you within four weeks of the new vehicle purchase date welcoming you to the Gulf Stream family. This call, made by your dedicated customer care person, is to let you know that if you ever need assistance with the operation of components, troubleshooting, or if you ever need to locate an authorized service center, you can rest assured that help is but a phone call away. With the G.O.L.D. Program we'll be there for you for the lifetime of your RV.



STANDARD BODY PAINT



DELUXE FULL BODY PAINT

BLUE & BLACK

(Crescendo logos are vinyl decals)



DELUXE FULL BODY PAINT

TAN & BURGUNDY

(Crescendo logos are vinyl decals)

Coach-Net®

24 HR. EMERGENCY ROADSIDE ASSISTANCE

- One Year Coach-Net Membership
- Towing and Winching
- Flat Tire Change
- Mobile Mechanic
- Delivery of emergency Fluids
- Jump-Start / Battery Boost
- Lockout

2 YEAR
UNLIMITED MILEAGE
TRANSFERABLE
WARRANTY
ON STRUCTURAL COMPONENTS*

One year unlimited mileage total use warranty under normal use against defects in material and/or workmanship in construction and original components.
*For purposes of this warranty, "Structural components" shall be limited to the structure of the side walls, front and back walls, roof and floor.
See the official written Gulf Stream Coach, Inc. Limited Warranty for details.

Chassis

- 28,000 GVWR, 330 HP CUMMINS WORKHORSE, 100 GAL FUEL TANK W/STEEL WHEELS & VIP STEERING WHEEL (8356)
- 29,500 GVWR, 330 HP CUMMINS WORKHORSE, 100 GAL FUEL TANK W/STEEL WHEELS & VIP STEERING WHEEL (8386)
- 26,000 GVWR, 300 HP CUMMINS FREIGHTLINER, 80 GAL FUEL TANK W/STEEL WHEELS (378, 368)

Exterior

- "Cradle of Strength" Construction:
 - Welded Steel Sub-Floor Truss System
 - 1-1/2" Tubular Metal Cage Construction on Sidewalls & Roof
 - Insulated Floors w/Virtually Seamless Structurewood Decking
 - Vacuum-Bond Laminated 2" Thick Sidewall Construction Smooth Filon Fiberglass
- PRE-MOLDED FRONT & REAR FIBERGLASS CAPS
- LAMINATED FIBERGLASS ROOF
- SLICK FIBERGLASS EXTERIOR W/GRAPHICS
- SINGLE PANE RADIUS WINDOWS*

Heating & Cooling

- DASH A/C
- (1) 40,000 & (1) 25,000 BTU FURNACES (8356 8386)
- 40,000 BTU DUCTED FURNACE (368 378)
- 13,500 BTU DUCTED ROOF A/C

Miscellaneous

- HEATED HOLDING TANKS
- EXTERIOR SIDEVIEW MIRRORS
- ARCTIC PACKAGE
- STAINLESS STEEL WHEEL INSERTS
- HYDRAULIC JACK LEVELING SYSTEM
- 10,000 LB TRAILER HITCH (8356 8386)
- 5,000 LB TRAILER HITCH (368 378)
- INTERIOR S.S. ENTRY ASSIST HANDLE
- CARPETED STORAGE BINS
- MUD FLAPS (FRONT & REAR)
- POWER STEPWELL COVER (8386)
- FIRE EXTINGUISHER
- DELUXE VINYL WRAPPED MAIN AWNING
- SLIDE OUT TOPPERS
- RALLY HOOK UP

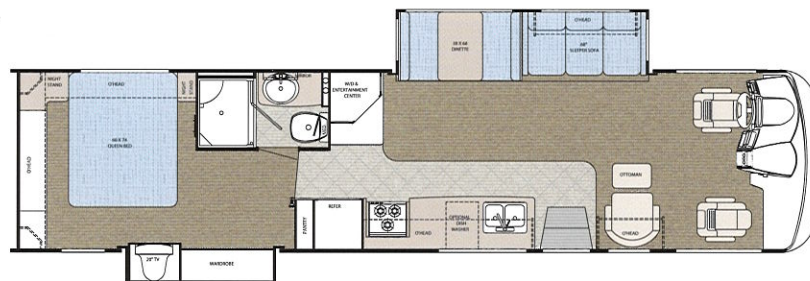
- HOSE FAUCET
- PAPER TOWEL ROLL DISPENSER
- CABLE TV HOOKUP
- TELEPHONE HOOKUP
- MAP LADDER

Electrical

- OVERHEAD DEFROST BLOWER
- COLOR BACK-UP MONITOR W/AUDIO
- WALL SWITCHES FOR ALL CEILING LIGHTS
- AM/FM/CASSETTE STEREO W/CD PLR & SPEAKERS
- EMERGENCY START SWITCH IN DASH
- MAP LIGHTS
- ANTENNA W/AMPLIFIER, BOOSTER & 2 JACKS
- CB ANTENNA
- (1) PHONE JACK IN KITCHEN & (1) IN BEDROOM
- AUTO DOUBLE ELECTRIC STEP (8356 8386)
- AUTO ELECTRIC STEP (368 378)
- 24" SAMSUNG FLAT SCREEN COLOR TV W/REMOTE IN FRONT OVERHEAD
- DVD READY
- DSS PREP
- LIGHTED EXTERIOR STORAGE BINS

MODEL 8356 CRW

Chassis	Workhorse	Interior Height	84"
Engine	330 Cummins	Wheelbase	228"
Fuel	100	Fresh	70 gal.
GVWR	28,000	Grey	75 gal.
Length	36'-4"	Black	75 gal.
Width	100"	LP Gas Tank	115 lbs.
Height w/AC	12'-3"	Furnace (BTU's)	40,000/25,000
		Water Heater w/DSI	10 gal.



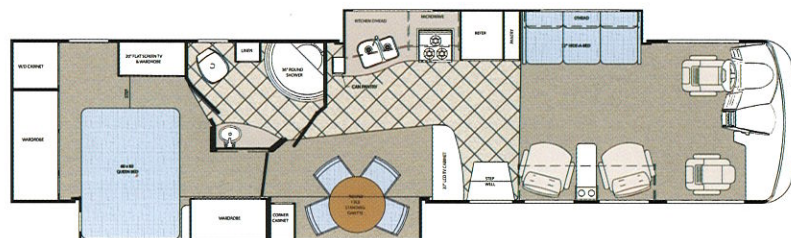
MODEL 8386 CRW

Chassis	Workhorse	Interior Height	84"
Engine	330 Cummins	Wheelbase	252"
Fuel	100	Fresh	90 gal.
GVWR	31,000	Grey	75 gal.
Length	38'-8"	Black	75 gal.
Width	100"	LP Gas Tank	115 lbs.
Height w/AC	12'-3"	Furnace (BTU's)	40,000/25,000
		Water Heater w/DSI	10 gal.



MODEL 8390 CRW

Chassis	Workhorse	Interior Height	84"
Engine	330 Cummins	Wheelbase	264"
Fuel	100	Fresh	90 gal.
GVWR	31,000	Grey	75 gal.
Length	40'-2"	Black	75 gal.
Width	100"	LP Gas Tank	115 lbs.
Height w/AC	12'-3"	Furnace (BTU's)	40,000/25,000
		Water Heater w/DSI	10 gal.



Bath

- POWER VENT IN COMMODE & SHOWER AREA
- SKY DOME IN BATH
- SHOWER W/GLASS DOOR & SURROUND
- PORCELAIN STOOL W/SPRAYER
- HOLDING TANK FLUSH KIT

Décor

- MIRRORING MEDICINE CABINET
- PRIVACY CURTAIN
- CORIAN KITCHEN COUNTERTOP
- LINOLEUM IN KITCHEN, BATH & HALL
- PLEATED SHADES
- METAL MINI BLIND KITCHEN
- CARPETED CEILING LINER
- DECORATIVE CROWN CEILING MOLDING
- MAPLE HARDWOOD INTERIOR

Furnishings

- 2-TONE COPILOT SEAT
- 2-TONE PILOT SEAT
- 3-POINT SEAT BELTS

- (2) BEDROOM CHAIRS W/OTTOMANS (378)
- SOFT TOUCH EURO RECLINER & OTTOMAN (PS) (8356)
- 60 X 74 BED W/DELUXE INNERSPRING MATTRESS (NA 8386)
- 60 X 80 BED W/DELUXE INNERSPRING MATTRESS (8386)
- CLOTH SLEEPER (H-A-B) SOFA (DS)
- SOFT TOUCH RECLINER (PS) (368 378)
- COMFORT PLUS DINETTE BOOTH BED
- VANITY BENCH (368, 378)
- (2) THROW PILLOWS (PER SOFA) & (2) BEDROOM PILLOWS
- SILVERWARE DRAWER (8356 8386 368)

Appliances

- LARGE DOUBLE DOOR, 2-WAY REFER
- MONITOR PANEL
- 30" OTR CONVECTION MICROWAVE
- 3-BURNER TOP
- FLUSH STOVE TOP COVER
- 10 GAL DSI WATER HEATER
- 115# LP GAS BOTTLE (8356 8386)

- 85# LP GAS BOTTLE (368 378)
- CARBON MONOXIDE DETECTOR
- LP GAS LEAK DETECTOR
- PREP FOR WASHER/DRYER (NA 378)

Power

- (2) 12 VOLT AUXILIARY BATTERIES
- BATTERY DISCONNECT
- 50 AMP SERVICE W/AUTO TRANSFER SWITCH & 80 AMP CONVERTOR
- GENERATOR READY

Holding tank capacities (both fresh water and waste water) are volume calculations based on overall tank dimensions. The capacities may differ from published calculations due to the result of tank installation, tank material variation, tank fitting locations and other plumbing variables.

Popular Options

- 32,400 GVWR 330HP MERCEDES FRTLNR, 100 GAL FUEL TANK W/ STEEL WHEELS (8386 8356 8390)
- REAR ROCKGUARD
- THERMOPANE WINDOWS
- FULL PAINT W/PAINTED GRAPHICS – BLUE
- FULL PAINT W/PAINTED GRAPHICS – TAN
- DELUXE METAL WRAPPED MAIN AWNING (REQUIRES FULL PAINT W/PAINTED GRAPHICS)
- SAND & BUFF
- BEDROOM 13,500 BTU DUCTED ROOF A/C
- 15,000 BTU DUCTED A/C IPO 13,500 BTU A/C
- 3-SPEED FANTASTIC ATTIC FAN
- HEATED & REMOTE MIRRORS
- 20" SAMSUNG FLAT SCREEN COLOR TV IN BEDROOM
- DELUXE AIR HORNS
- SONY SURROUND SOUND SYSTEM W/DVD PLAYER
- ELECTRONICS PACKAGE
 - 30" LCD TV IN FRONT OVERHEAD
 - LOWRANCE GPS NAVIGATION SYSTEM
 - WINEGUARD SATELLITE DISH
 - MP3 PLAYER
- 2000 WATT INVERTER W/(4) 6 VOLT BATTERIES (8356 8386 8390)
- 2000 WATT INVERTER (324 368 378)
- 7.5 ONAN QUIET DIESEL GENERATOR
- 7.5 GENERAC QUIET DIESEL GENERATOR
- 2-TONE 6-WAY POWER PILOT SEAT
- 2-TONE 6-WAY POWER COPILOT SEAT
- SOFT TOUCH SLEEPER (H-A-B) SOFA IPO CLOTH SLEEPER SOFA (DS)
- F/S BUFFET DINETTE W/(2) RESIDENTIAL DINING CHAIRS IPO BOOTH DINETTE
- (2) FOLDING CHAIRS
- EURO RECLINER IPO SOFT TOUCH RECLINER (324 368 378)
- LARGE 2-WAY REFER W/ICEMAKER & PURIFIER
- SIDE BY SIDE REFER W/ICEMAKER & PURIFIER
- COMBO WASH/DRYER W/OUTSIDE VENT (NA 378)
- DISHWASHER (8356 368)

FRONT ENGINE DIESEL

CRESCENDO

BY GULF STREAM®

Up to
**12
MPG.***

*actual mileage per gallon may vary due to road conditions, terrain, driver habits, cargo weight, or towing.



FRED FACTS

The real advantages of Front Engine Diesel.

PERFORMANCE • Front Engine configuration uses natural motion and ram air to cool the engine allowing the valuable horsepower to concentrate on powering the coach, not cooling the engine.

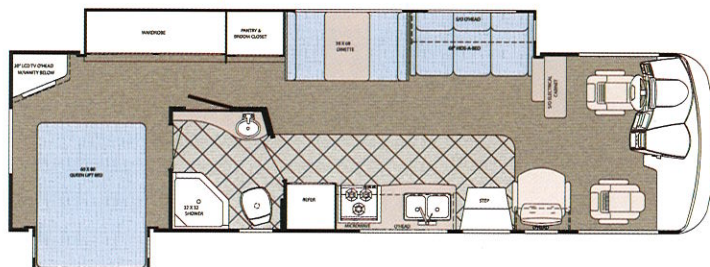
EFFICIENCY • The Front Engine Diesel chassis touts a fuel economy of an estimated 12-13 MPG *

*actual mileage per gallon may vary due to road conditions, terrain, driver habits, cargo weight, or towing.

STABILITY • By moving the Engine to the front of the unit and by increasing the wheelbase by 20" we create a more comfortable ride. This also eliminates porpoising (the forward and aft rocking caused by the engine being placed in the rear of a unit with a smaller wheelbase) A more stable ride means less wear on the unit and on the driver.

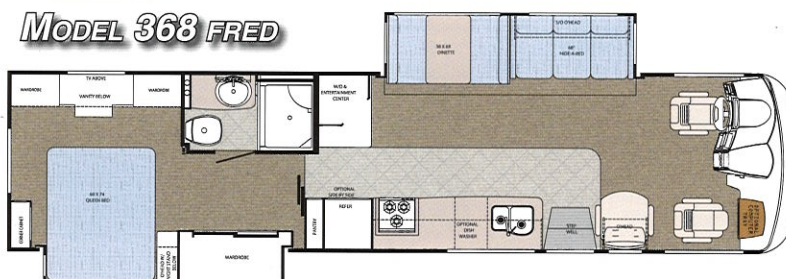
MODEL 324 FRED

STANDARD BODY PAINT
OPTIONAL TAN OR BLUE FULL BODY PAINT AVAILABLE



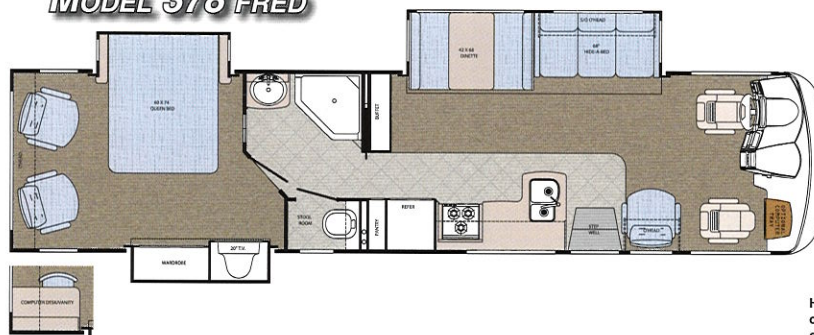
Chassis	Freightliner	Wheelbase	228"
Engine	5.9L 300hp	Fresh	57 gal.
Fuel	60	Grey	50 gal.
GVWR	22,000	Black	50 gal.
Length	32'-10"	LP Gas Tank	85 lbs.
Width	100"	Furnace (BTU's)	40,000
Height w/AC	12'-0"	A/C Front (BTU's)	13,500
Interior Height	84"	Water Heater w/DSI	10 gal.

MODEL 368 FRED



Chassis	Freightliner	Wheelbase	242"
Engine	5.9L 300hp	Fresh	60 gal.
Fuel	80	Grey	50 gal.
GVWR	26,000	Black	50 gal.
Length	36'-8"	LP Gas Tank	85 lbs.
Width	100"	Furnace (BTU's)	40,000/25,000
Height w/AC	12'-0"	A/C Front (BTU's)	13,500
Interior Height	84"	Water Heater w/DSI	10 gal.

MODEL 378 FRED



Chassis	Freightliner	Wheelbase	242"
Engine	5.9L 300hp	Fresh	63 gal.
Fuel	80	Grey	50 gal.
GVWR	26,000	Black	50 gal.
Length	36'-8"	LP Gas Tank	85 lbs.
Width	100"	Furnace (BTU's)	40,000/25,000
Height w/AC	12'-0"	A/C Front (BTU's)	13,500
Interior Height	84"	Water Heater w/DSI	10 gal.



MODEL 324

The 324 highlights the all-new full wall slide. Unlike other manufacturers Gulf Stream uses the large bathroom as a partition between the bedroom and the rest of the coach. This allows you to entertain guests without having the bedroom exposed for all to see.

Holding tank capacities (both fresh water and waste water) are volume calculations based on overall tank dimensions. The capacities may differ from published calculations due to the result of tank installation, tank material variation, tank fitting locations and other plumbing variables.



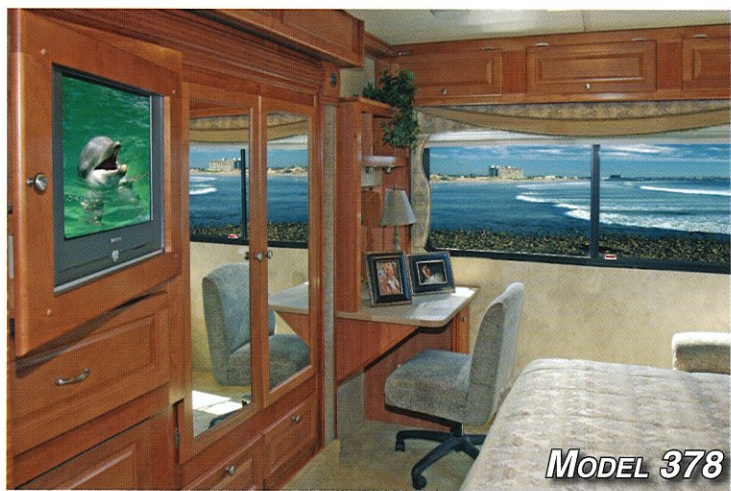
MODEL 368

Open living areas that incorporate large slide rooms and residential style furniture make home away from home very comfortable.

The kitchen is well equipped with a 3-burner high performance range; 2-door, 2-way refrigerator and large convection microwave.



MODEL 378



MODEL 378



This bedrooms feature Gulf Stream's Two-Zone Living Concept. The optional computer workstation and sitting chair give this bedroom functionality beyond sleeping. E-mail, paperwork, picking up a good book or watching TV can all be enjoyed in this second zone.

Features & Benefits

- CUMMINS ISB 300HP - 5.9L DIESEL ENGINE
600 LBS.-FT. OF TORQUE - 22.5" TIRES
- 26,000 GVWR FREIGHTLINER
- 55 - DEGREE WHEEL CUT
- 60" PARABOLIC LEAF SPRING /
SACHS SHOCKS
- BOSCH DISC BRAKES W/4-WHEEL ABS
- LOWERED CENTER OF GRAVITY
- LOWERED ENGINE MOUNT
- 80 GALLON FUEL TANK - IMPROVED MPG
- 15,000 MILE OIL CHANGE INTERVAL
- 5-YEAR / 100,000-MILE COOLANT
- 400%-LONGER-LIFE TRANSMISSION FLUID
- READILY IDENTIFIABLE SERVICE POINTS
- 5 SPEED ALLISON TRANSMISSION
- HARDWOOD CABINETRY
- SEAMLESS FIBERGLASS ROOF
- GALVANIZED STEEL COMPARTMENTS
- FLUSH FLOOR SLIDE OUT ROOMS
- 13,500 BTU H-DUCTED ROOF A/C
- 40,000 BTU FURNACE
- CORIAN KITCHEN COUNTERTOPS
- 30" CONVECTION OVEN
- 3-BURNER RANGE TOP
- LARGE DOUBLE DOOR 2-WAY REFRIGERATOR
- 10 GALLON WATER HEATER
- 7.5 DIESEL QUIET GENERATOR
- HYDRAULIC JACK LEVELING SYSTEM
- COLOR BACK-UP MONITOR
- 24" FLAT SCREEN TV
- 5,000 LBS. HITCH
- ELECTRIC IGNITION WATER HEATER
W/BY-PASS VALVE
- 85# LP GAS BOTTLE
- LP GAS LEAK DETECTOR
- CARBON MONOXIDE DETECTOR
- ARCTIC PACKAGE
- - HEATED HOLDING TANKS,
- REAR LADDER

Popular Options

- 13,500 BTU DUCTED BEDROOM A/C
- 3-SPEED FANTASTIC FAN
- 20" FLAT SCREEN BEDROOM TV
- HEATED / REMOTE MIRRORS
- THERMO PANE WINDOWS

GULF STREAM

 COACH, INCORPORATED
 FAMILY VALUE



GULF STREAM



COACH, INCORPORATED
FAMILY VALUE

Gulf Stream Coach

has been a manufacturer of recreational vehicles for over 20 years. Our slogan, "Family Value", speaks to our family-owned company, the value offered in our products and to our customers.

We use advanced manufacturing techniques to build everything from entry-level travel trailers to luxury motorhomes. We offer the largest product line in the industry.

RV dealers and consumers look to Gulf Stream for high-value products offering quality construction, innovative features, contemporary design, unmatched service and on-going support.

We'd love to have you as part of the family

The Gulf Streamers RV Club is a valuable benefit to all Gulf Stream owners. Members enjoy Money saving benefits, staying active and participating in the various rallies and caravans offered throughout the United States and Canada. Go to www.streamers.gulfstreamcoach.com for more information.



WWW.GULFSTREAMRV.COM
1-800-765-8787-EXT. 3288

For more information and available options, contact your local Gulf Stream dealer, www.gulfstreamRV.com or Gulf Stream Coach, Inc. Gulf Stream Coach, Inc., reserves the right to make changes in prices, colors, materials, components and specifications and to discontinue models at any time without notice or obligation. Gulf Stream Coach, Inc., assumes no responsibility for any error in type or print reproduction of specifications or floorplans in this brochure. Photographs may show equipment or items that are optional and are not included in the purchase price of the coach. Test drive and review a current model at your nearest Gulf Stream dealer. © 2002 Gulf Stream Coach, Inc., Nappanee, Indiana U.S.A.

6/2-07-SP-2K Ver 1

POST OFFICE BOX 1005

• YOUR GULF STREAM COACH DEALER •

NAPPANEE, IN 46550

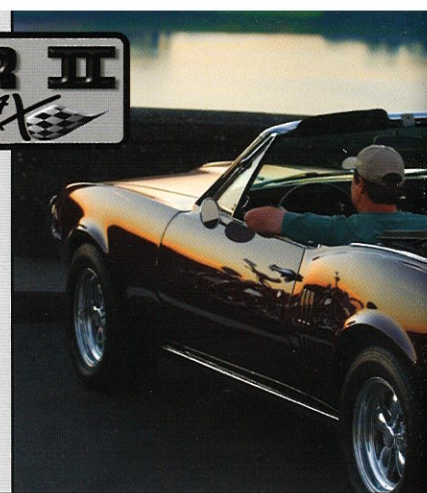
•

TRANSPORTER II

BY ENDURA MAX

FUN DESTINATIONS AWAIT AS YOUR FULLY LAMINATED SPORTS TRANSPORTER TRAILER MOVES AND STORES YOUR PRECIOUS SPORTS EQUIPMENT OR VEHICLE IN A DUST FREE, INSULATED, AND SECURE ENVIRONMENT.

THE LIGHTWEIGHT SANDWICH STYLE CONSTRUCTION PROVIDES SUPERIOR STRENGTH. THE TRANSPORTER II HAS A DAMAGE RESISTANT HIGH QUALITY GEL COATED FIBERGLASS EXTERIOR THAT CONTINUES TO LOOK GREAT AFTER YEARS OF USE.



TRANSPORTER II - SPORTS HAULER



OPTIONAL EQUIPMENT

- FULL BODY PAINT TO MATCH YOUR VEHICLE
- 5,000# ELECTRIC RAMP DOOR
- 98 GALLON HEATED WATER TANK
- 24 GALLON FUEL STATION
- 60 AMP CONVERTER 130 AMP SERVICE
- V-NOSE CABINET PACKAGE
- MICROWAVE
- DOUBLE SIDE-SWING DOOR/RAMP
- BLACK TPO FLOORING
- EXTERIOR FLOOD LIGHT
- ADJUSTABLE D-RING TIE DOWN SYSTEM
- ADDITIONAL OPTIONS AVAILABLE SEE YOUR SALES REP



SPECIFICATIONS

Model	Tires	I-beam	Axles	Base UVW*	Fresh Water Option
12'	15"	8"	7,000#	1,879#	66 gal
18'	15"	8"	7,000#	2,815#	76 gal
24'	15"	8"	10,400#	3,704#	98 gal
30'	16"	10"	14,000#	4,647#	98 gal

*BASE UNLOADED VEHICLE WEIGHT EXCLUDES OPTIONS.
NEVER EXCEED GVWR OR AXLE/HITCH RATINGS OF YOUR TOW VEHICLE.

